

# Offshore is onshore

*Establishing an International Rescue Hub in Iceland*

Rasmus Dahlberg, PhD Fellow  
Copenhagen Center for Disaster Research  
Danish Emergency Management Agency

---





# The NORDRESS project

- Nordic Resilience and Societal Security
- One of two new Nordic Centres of Excellence on societal security
- Kick-off: Jan 29 2015
- Funding: 2015-2020
- Funded by NordForsk
- Hosted by the University of Iceland



# The NORDRESS project

## Work Package 5.4 tasks:

1. Mapping of offshore hazards and vulnerabilities in the Arctic.
2. Investigation and evaluation of existing modes organizational learning and knowledge capturing from Search and Rescue Exercises in the Arctic.
3. Investigating existing modes of imagining, discovering and reacting to emerging offshore hazards and vulnerabilities in the Arctic.
4. Development of a concept for computer-assisted cross-boundary tabletop SAR exercises in the Arctic.
5. **A feasibility study of the establishment of an “International Rescue Hub” at the former US Naval Air Station in Keflavík, Iceland.**

# Keflavík Rescue Hub



# Keflavík Rescue Hub



## Former US Naval Air Station Keflavík

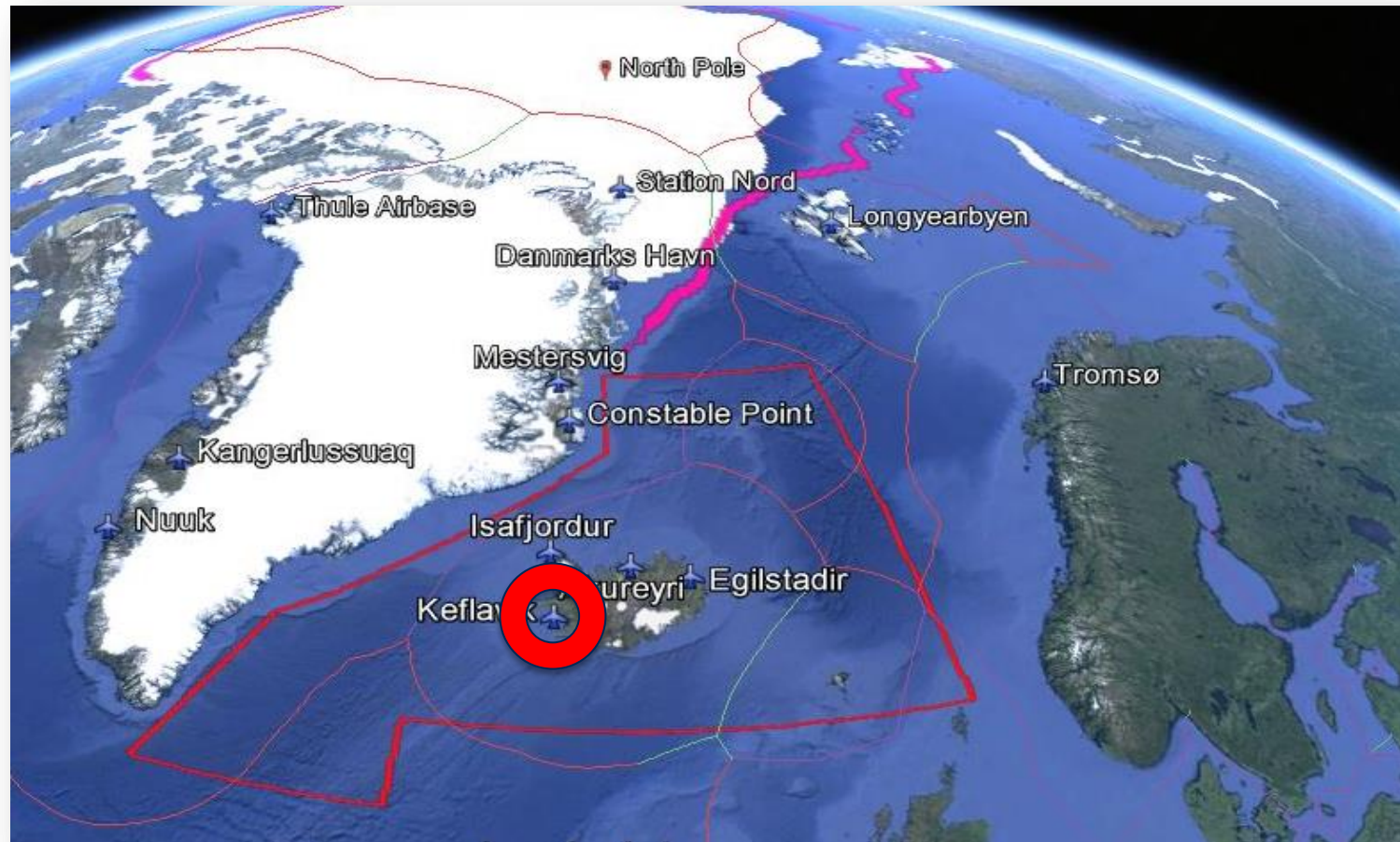
- Abandoned by the US forces in 2006
- Operated by the Icelandic Coast Guard
- Used for Nato Air Policing Missions etc.

## Facilities:

- Joint Command/Coordination center
- Very large runways, aprons etc.
- Hangar 831 with storage areas
- Accommodation for 200+ people
- Good access to Icelandic infrastructure:
  - Reykjavík port
  - National Hospital (triage facilities)



# Keflavík Rescue Hub



# "Offshore is onshore"

- Number of transpolar flights and cruise ships in the Arctic is increasing
- Distances and lack of infrastructure in the Arctic are *not* decreasing...
- Focus must be on **coordination, communication and common situational awareness**
- Resilience requires rapidity



# "Offshore is onshore"

## Feasibility study of Rescue Hub project:

- Logistics or coordination?
- Legal and policy matters (HNS)
- Funding, ownership, responsibility
- Way ahead: planning and execution
- Open symposium in Reykjavík Dec 1
- Expert workshop in Keflavík Dec 2

# Additional information



Rasmus Dahlberg  
[dahlberg@sund.ku.dk](mailto:dahlberg@sund.ku.dk)

COPE: [cope.ku.dk](http://cope.ku.dk)

NORDRESS: [nordress.hi.is](http://nordress.hi.is)